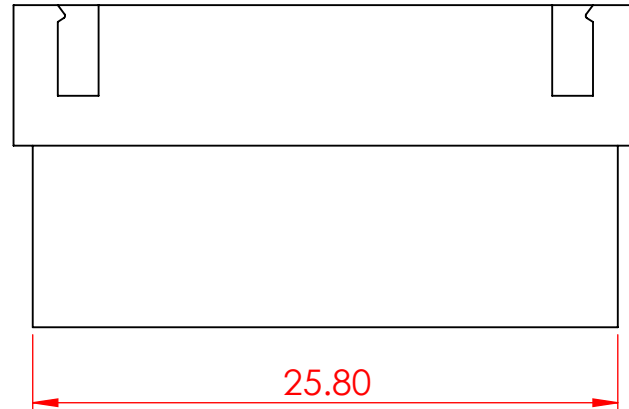
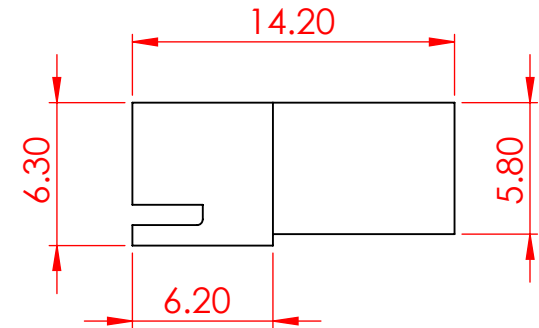
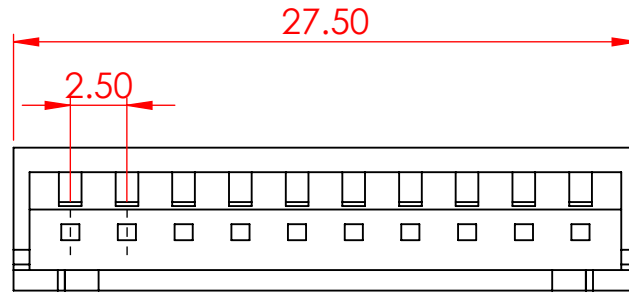


TOLERANCE UNLESS OTHERWISE SPECIFIED	
.X	±0.3
.XX	±0.2
.XXX	±0.1

THIS IS A C.A.D. GENERATED DRAWING
DO NOT MAKE MANUAL REVISIONS TO MASTER.



ISSUE NUMBER	
ORIGINAL	①



SPECIFICATIONS
VOLTAGE RATING: 250V AC/DC
CURRENT RATING: 3A AC/DC
WITHSTANDING VOLTAGE: 1000V AC/MIN
TEMPERATURE RANGE: -40° C TO 105° C
INSULATION RESISTANCE: 1000MΩ MIN.

MATERIAL: NYLON66, UL94V-0
COLOR: NATURAL

USE CONTACT: 14K-292-421
(TIN-PLATED)

MATES WITH HOUSING: 14K-510-210-AA2

MATES WITH PIN HEADER: N/A
TOP ENTRY CONTACT CODES: N/A
SIDE ENTRY CONTACT CODES: N/A

MATES WITH SMT: N/A
SMT CONTACT CODES: N/A

14K SERIES 2.50 PITCH PIN HOUSING

ACAD REFERENCE NO.: 14K Assembly		UNIT: MM
DRAWN: V.K.	DATE: 02/07/24	
CHECKED: R.S.M	DATE: 02/21/24	
SCALE: 3:1	SHEET 1 OF 1	
DRAWING NUMBER: 14K-510-210-AA1		ISSUE
PART NUMBER: 14K-510-210-AA1		1



THIS SERIES FULLY CONFORMS TO
THE EUROPEAN UNION DIRECTIVES
2011/65/EU FOR RoHS COMPLIANCY.



EDAC INC
TORONTO, ONTARIO
CANADA
YOUR CONNECTION TO QUALITY & SERVICE

THESE DRAWINGS AND SPECIFICATIONS
ARE THE PROPERTY OF EDAC INC., AND
SHALL NOT BE REPRODUCED, OR COPIED
OR USED AS THE BASIS FOR THE
MANUFACTURE OR SALE OF APPARATUS
WITHOUT WRITTEN PERMISSION.